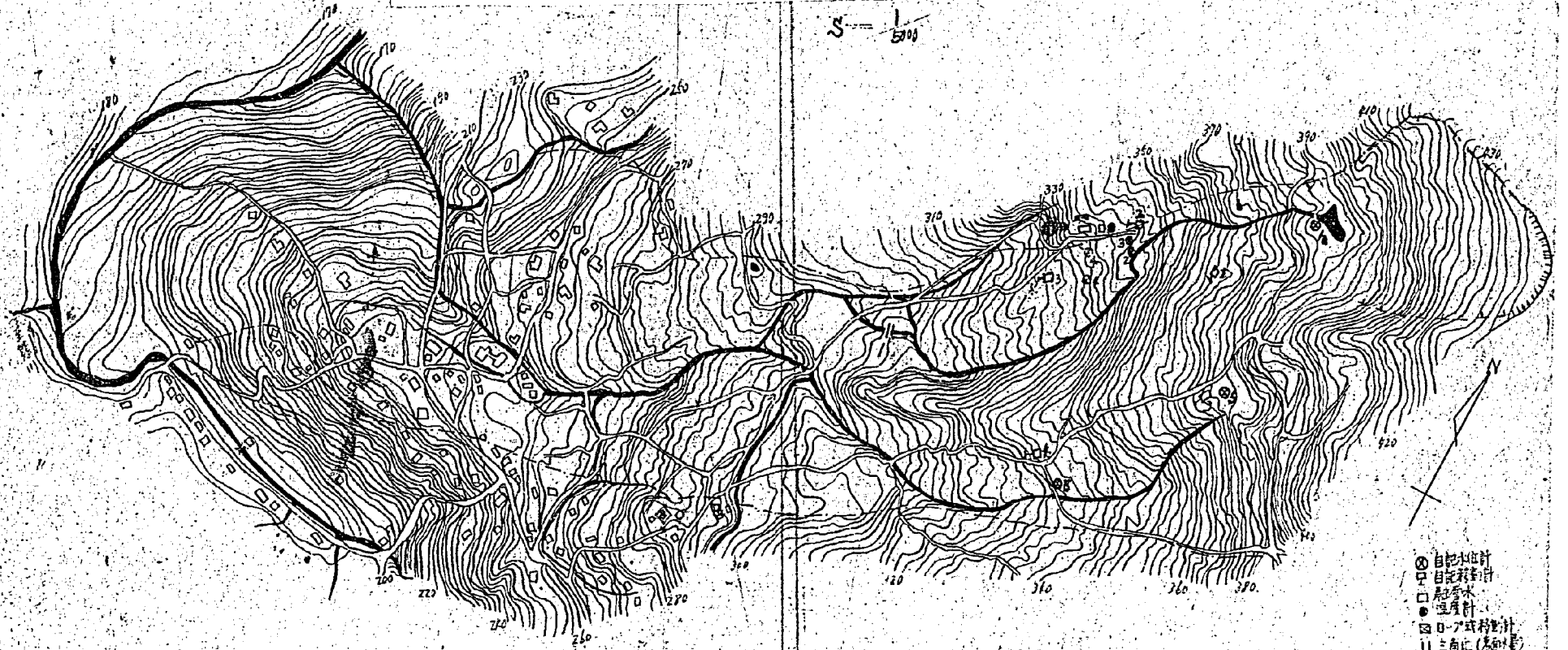
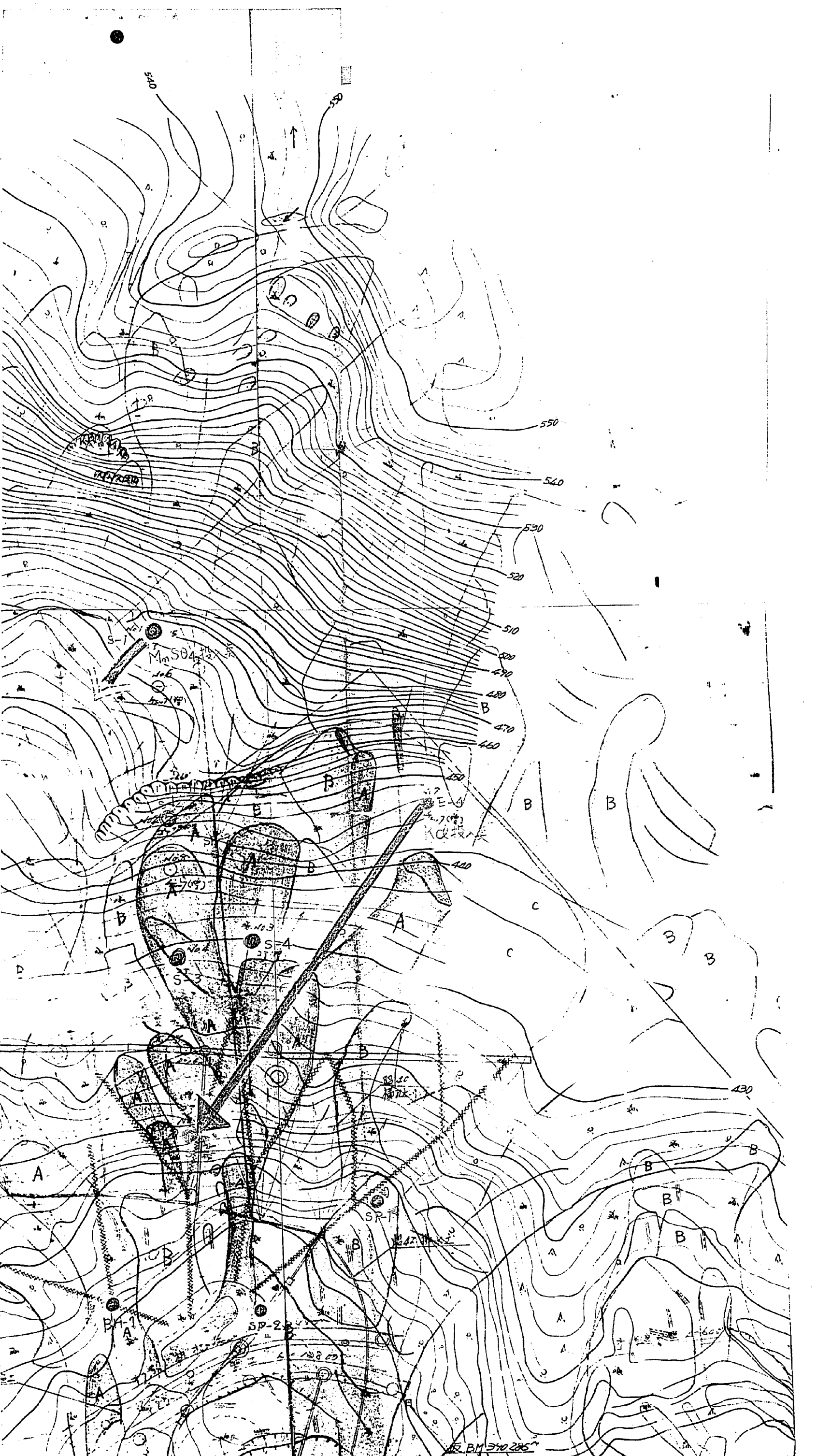


痕供養寺地すべり調査地点位置図

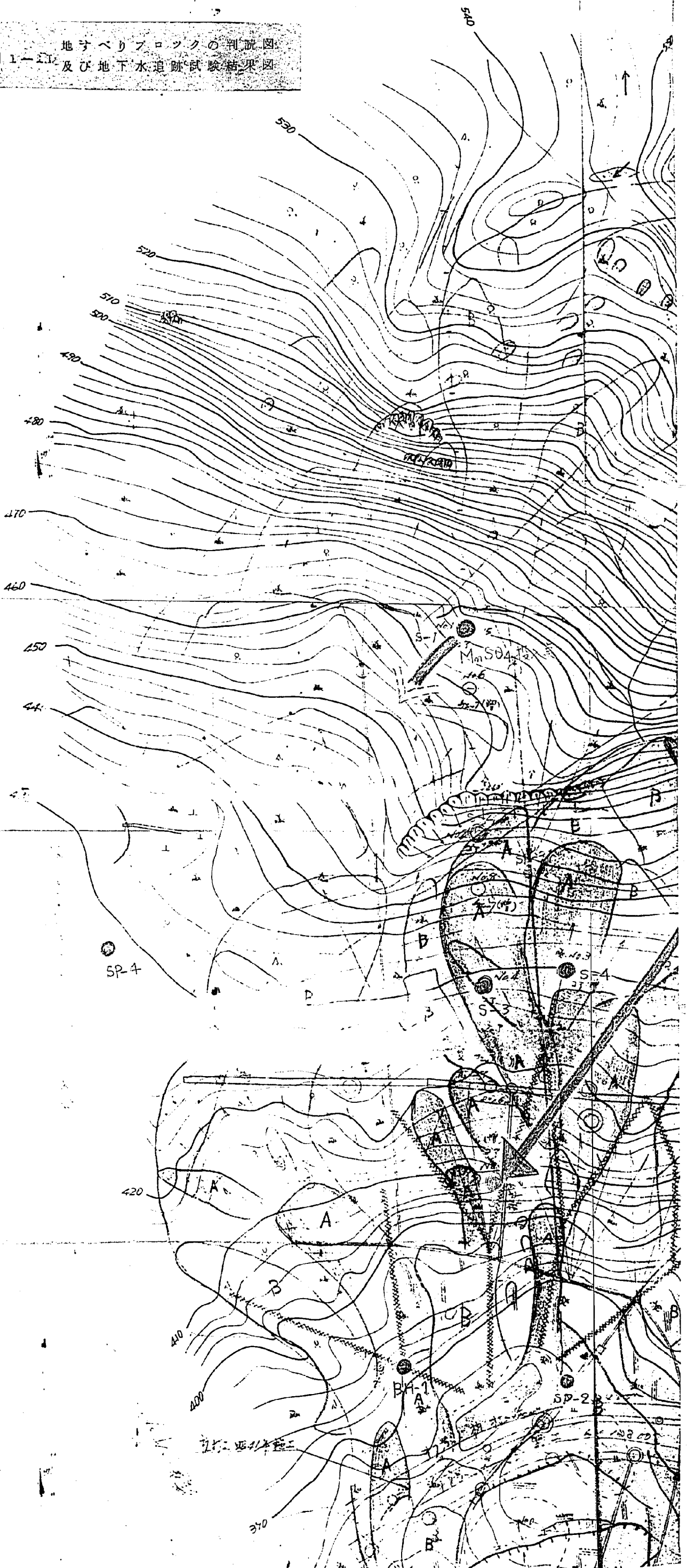
S = 1/5000



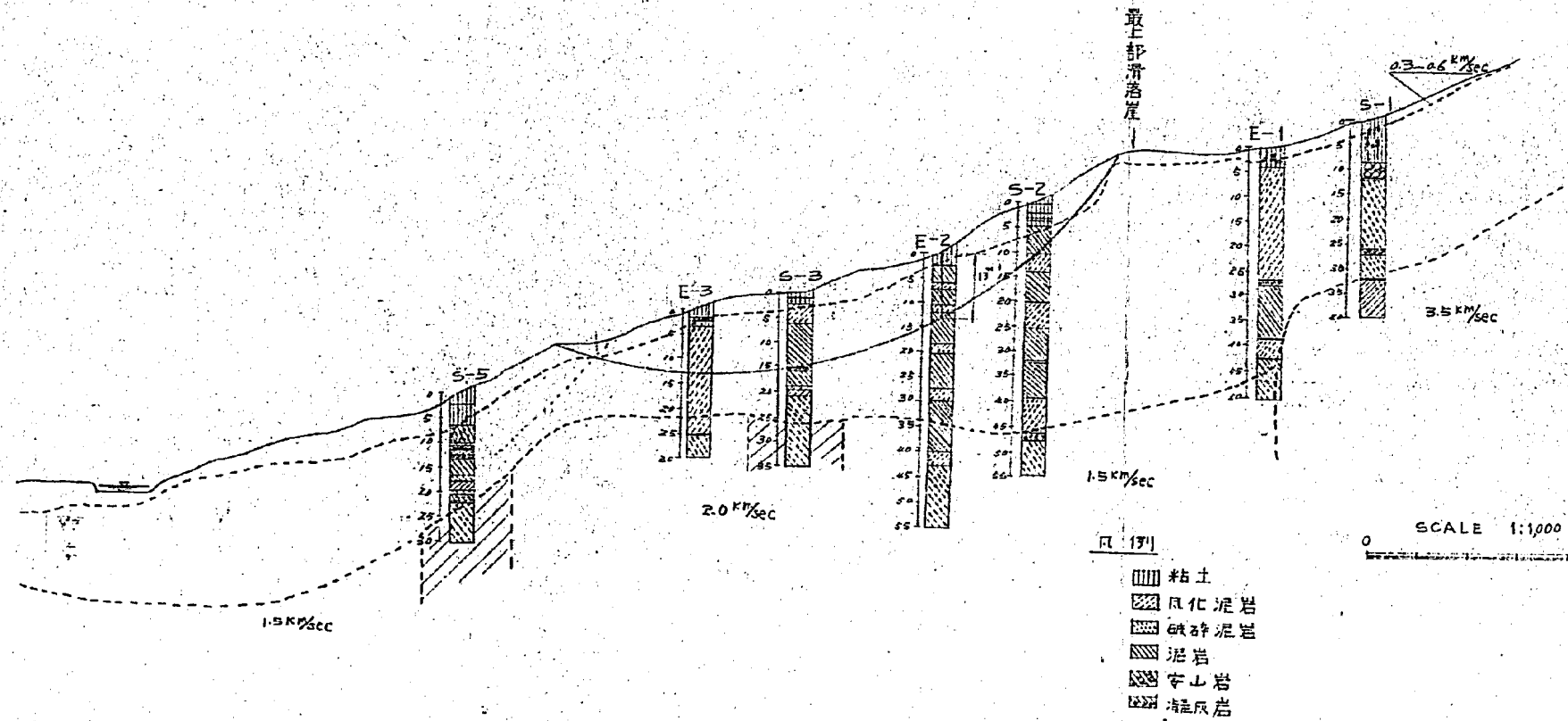
- ⊗ 自記水位計
- ⊠ 自記雨量計
- 雨量計
- ⊡ 雨量計
- △ 三角点 (標高)



地すべりブロックの判読図
 及び地下水追跡試験結果図



猿供養寺地すべり地層断面図(最上部地すべりブロック)



15 = 1 10 = 11.27 30

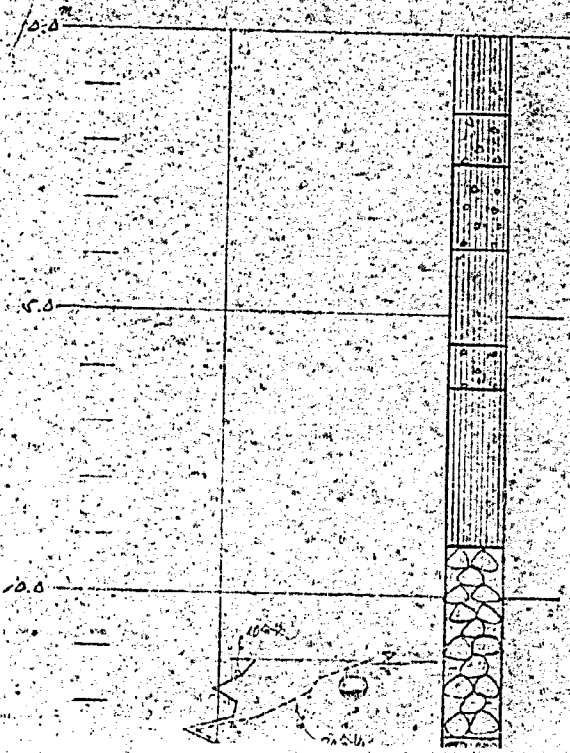
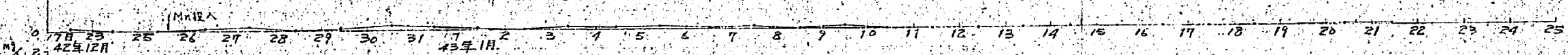
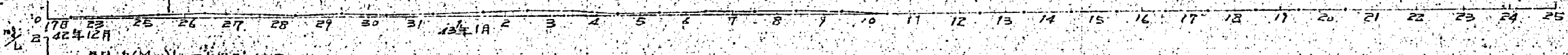


圖 3-2
SP-1 (Mn) 地下水追蹤結果



SP-2 (Mn) 地下水追蹤結果



BH-B (Mn) 地下水追蹤結果



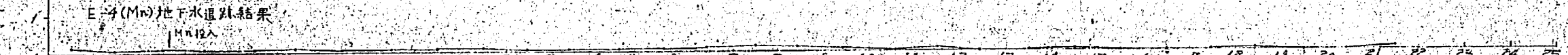
S-5 (Mn) 地下水追蹤結果



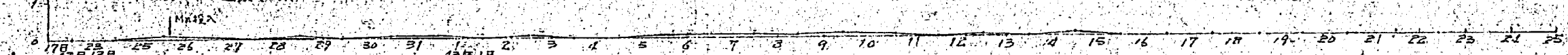
S-3 (Mn) 地下水追蹤結果



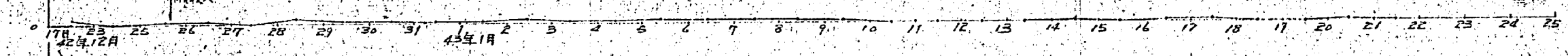
S-4 (Mn) 地下水追蹤結果



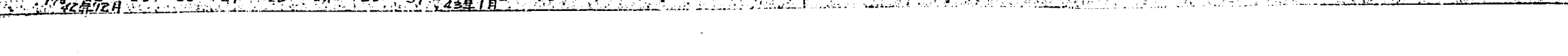
E-4 (Mn) 地下水追蹤結果



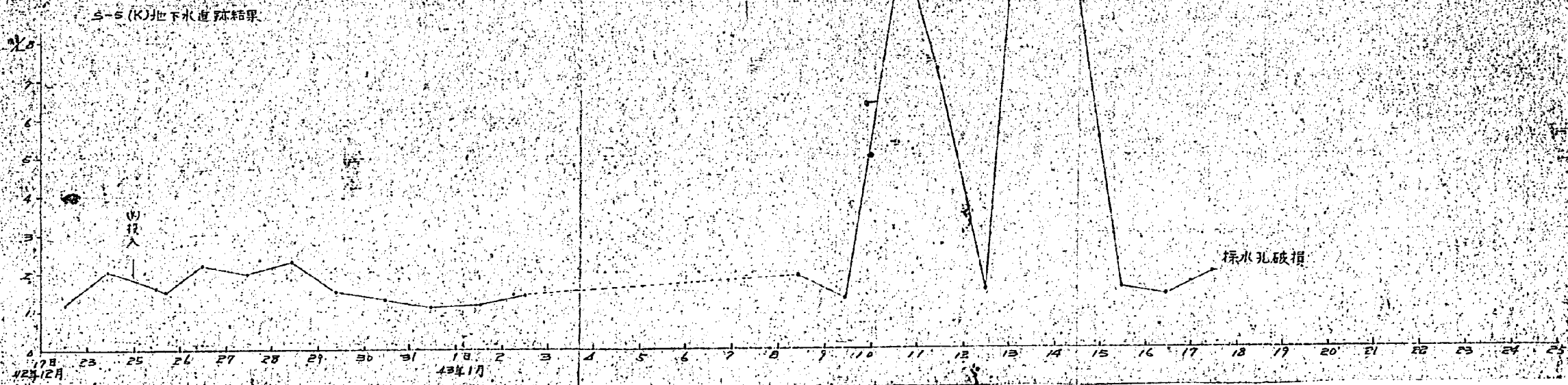
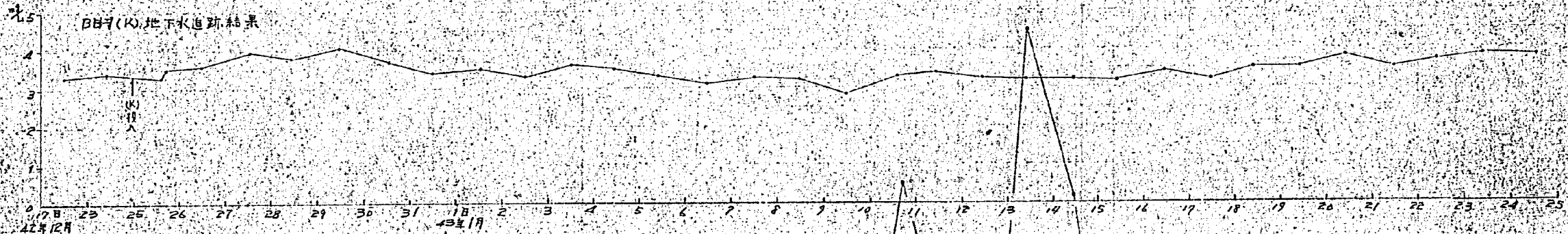
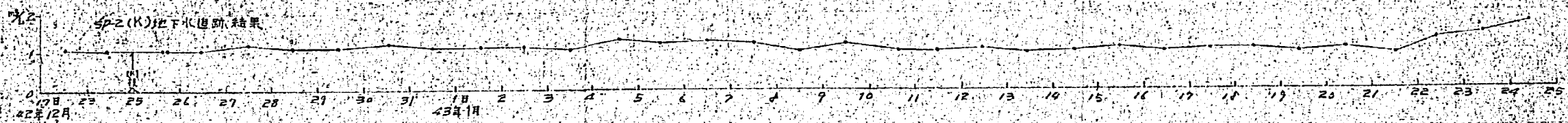
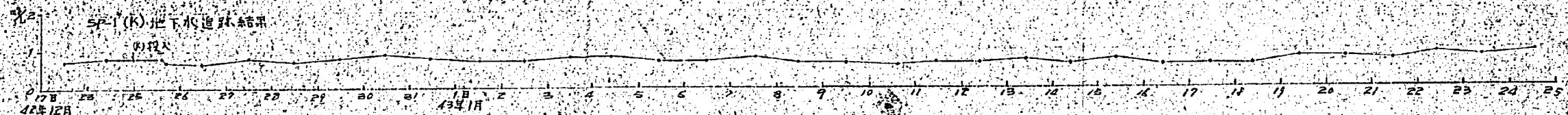
SP-3 (Mn) 地下水追蹤結果

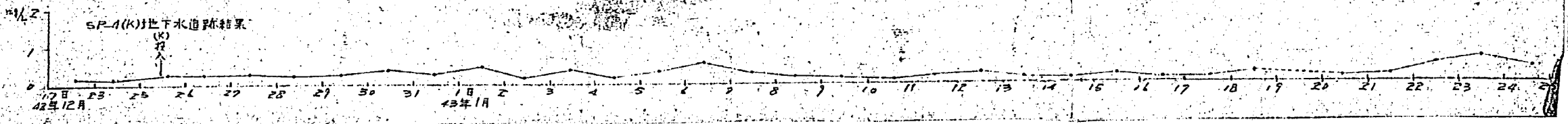
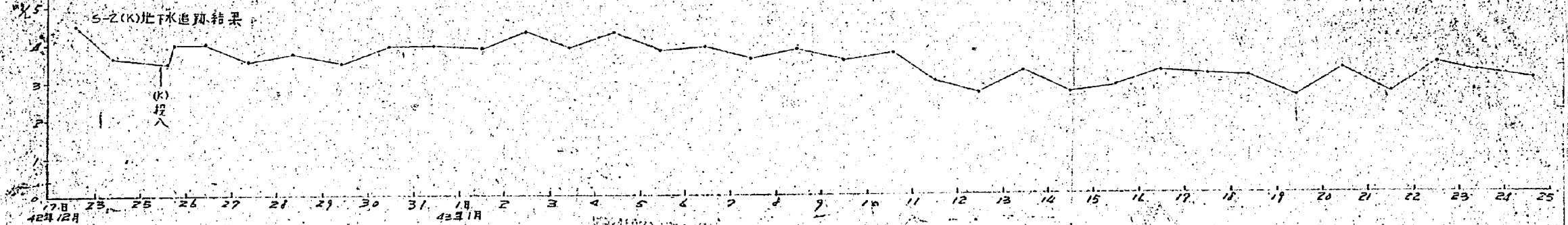
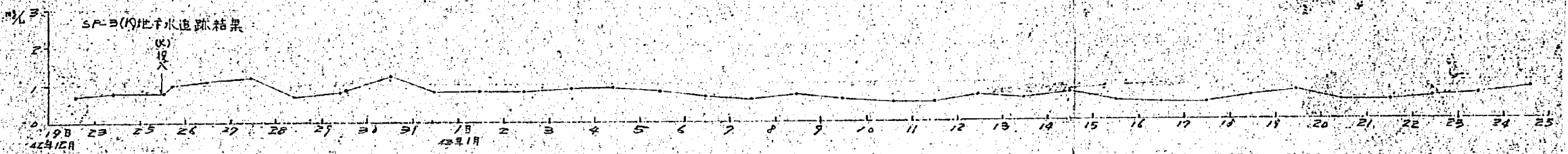
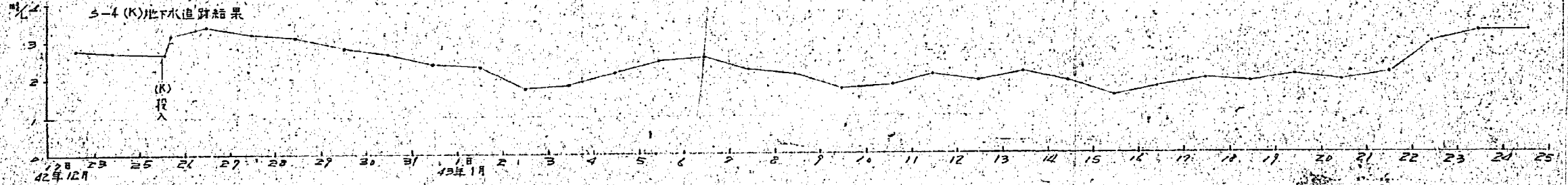
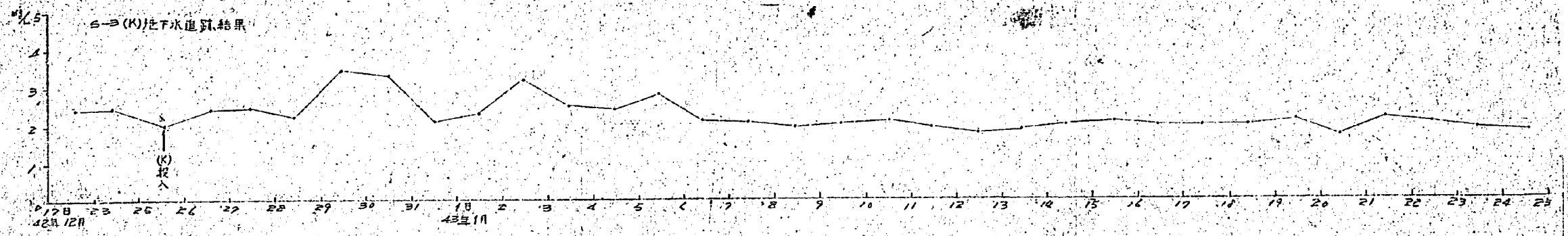


S-2 (Mn) 地下水追蹤結果



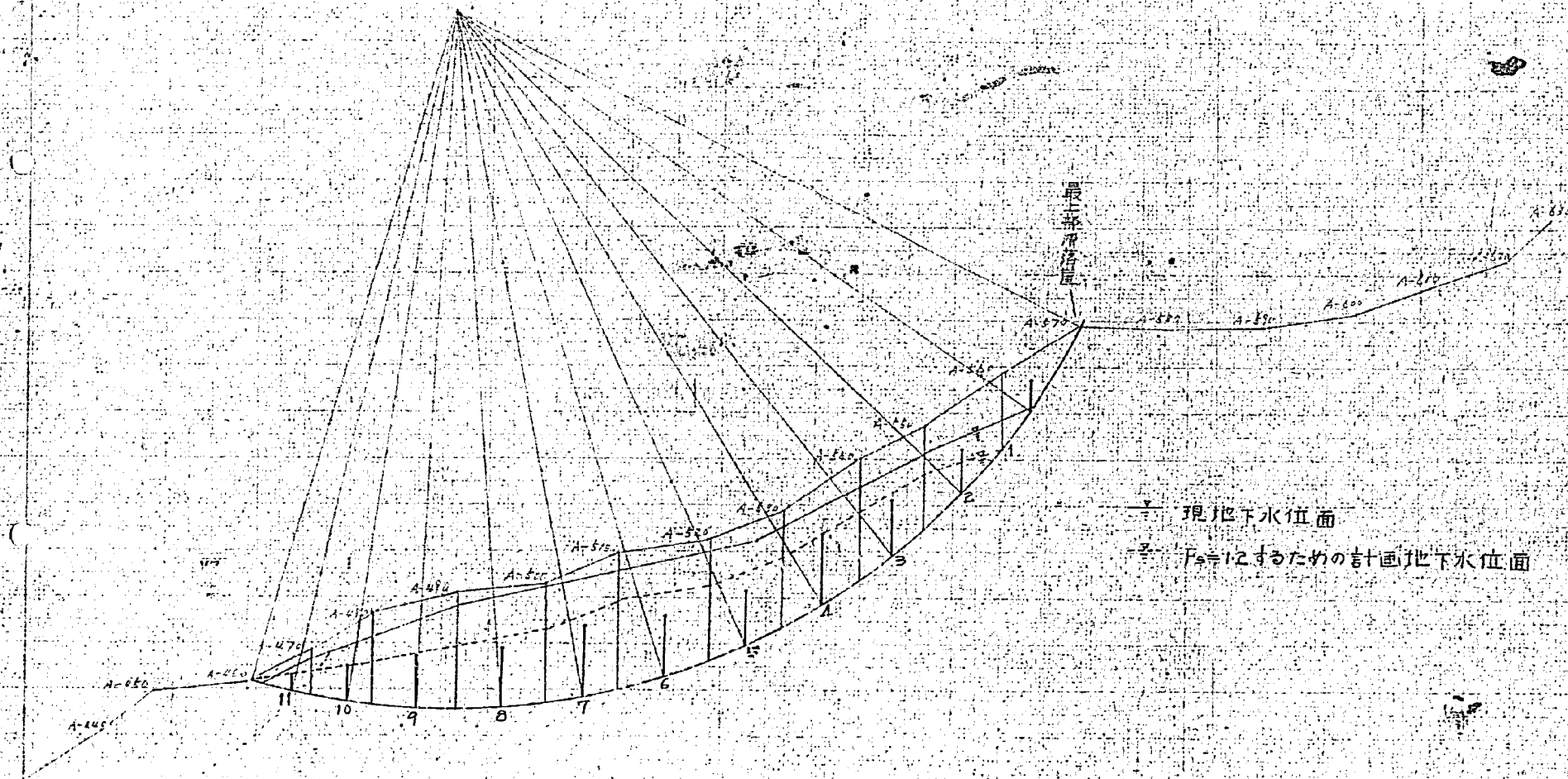
SP-4 (Mn) 地下水追蹤結果





第一アロツク安定解析圖

S=1:500



— 現地下水位面
- - - Fs=1にするための計画地下水位面

斜面安定計算表 (表 - 1)

No.	h_1	h_2	d	A	θ	$\sin \theta$	$\cos \theta$	$r_t=1.89$ rt. A. 1	T	N	ℓ	H_n	H_{n+1}	$\frac{U}{2} \frac{H_n + H_{n+1}}{\ell}$	$N-U$
1	0	7.6	8.6	33.54	55°30	0.824	0.566	63.39	52.23	35.24	15.4	0	2.7	6.48	2876
2	7.8	11.0	8.5	79.90	47°00	0.731	0.682	151.01	110.39	102.99	12.5	2.7	8.0	66.88	36.11
3	11.0	12.8	6.8	80.92	39°00	0.629	0.777	152.94	96.20	118.85	8.7	8.0	10.0	78.30	40.53
4	12.8	12.5	8.1	102.46	32°00	0.530	0.848	193.65	102.63	164.22	9.7	10.0	10.7	100.40	63.82
5	12.5	13.0	7.8	99.45	26°00	0.438	0.899	187.96	82.35	168.98	8.7	10.7	12.0	98.74	70.24
6	13.0	14.7	9.6	132.96	18°00	0.309	0.951	251.29	77.65	238.98	10.0	12.0	12.8	124.00	114.98
7	14.7	12.8	8.0	110.00	11°00	0.191	0.982	207.90	39.71	204.16	7.9	12.8	12.8	101.12	103.04
8	12.8	12.7	9.6	122.40	4°00	0.070	0.998	231.33	16.19	230.87	9.5	12.8	11.0	113.05	117.82
9	12.7	9.8	8.9	100.12	-3°00	0.052	0.999	189.23	-9.84	189.04	9.0	11.0	7.2	81.90	107.14
10	9.8	4.9	6.4	47.04	-8°00	0.139	0.990	88.90	-12.36	88.01	6.4	7.2	3.8	35.2	52.81
11	4.9	0	6.5	15.92	-13°00	0.225	0.974	30.09	-6.77	29.31	7.0	3.8	0	13.3	16.06
\sum_{1}^{11}									548.36	1570.63	104.8			819.37	751.26